

PLAN 50M-346

I CERTIFY THAT THIS PLAN IS REGISTERED IN THE LAND REGISTRY OFFICE FOR THE LAND TITLES DIVISION OF RUSSELL (No.50) AT 8:37 O'CLOCK ON THE 5th DAY OF May 2020

AND ENTERED IN THE PARCEL REGISTER FOR P.I.N. 69060-1826, 69060-1121 AND THE REQUIRED CONSENTS ARE REGISTERED AS PLAN DOCUMENT NUMBER RC-141197

THIS FINAL PLAN OF SUBDIVISION IS APPROVED UNDER SECTION 51(58) OF THE PLANNING ACT R.S.O. 1990

THIS 22 DAY OF April 2020

Juban Lambert
 JULIAN LENIHART
 DIRECTOR OF INFRASTRUCTURE AND PLANNING
 CITY OF CLARENCE-ROCKLAND

REPRESENTATIVE FOR LAND REGISTRAR

K. Sp...

THIS PLAN COMPRISES PART OF PIN 69060-1826 AND PART OF PIN 69060-1121

PLAN OF SUBDIVISION OF

PART OF LOTS C AND D CONVESSION 8 (NEW SURVEY)
 (GEOGRAPHIC TOWNSHIP OF CLARENCE)

CITY OF CLARENCE-ROCKLAND
 COUNTY OF RUSSELL

Scale 1:500

30 METRES

Stantec Geomatics Ltd.

METRIC CONVERSION

DISTANCES AND COORDINATES SHOWN ON THIS PLAN ARE IN METRES AND CAN BE CONVERTED TO FEET BY DIVIDING BY 0.3048

GRID SCALE CONVERSION

DISTANCES ARE GROUND AND CAN BE CONVERTED TO GRID BY MULTIPLYING BY THE COMBINED SCALE FACTOR OF 1.00000899.

BEARING NOTE

BEARINGS ARE GRID, DERIVED FROM CAN-NET VRS NETWORK GPS OBSERVATIONS ON HORIZONTAL CONTROL MONUMENTS 19800563 AND 19800554, CENTRAL MERIDIAN, 76° 30' WEST LONGITUDE MTM ZONE 9, NAD83 (CSRS).

19800563 N:5045485.91 E:399990.15
 19800554 N:5043969.20 E:402767.06

NOTES

1. ALL PLANTED MONUMENTS SHOWN HEREON ARE IRON BARS (IB) UNLESS OTHERWISE NOTED.

OWNER'S CERTIFICATE PART OF PIN 69060-1826 PART OF PIN 69060-1121

THIS IS TO CERTIFY THAT:

1. LOTS 1 TO 33, BOTH INCLUSIVE, THE STREETS, NAMELY rue Diamond Street and rue Rutile Street, HAVE BEEN LAID OUT IN ACCORDANCE WITH OUR INSTRUCTIONS.

2. THE STREETS ARE HEREBY DEDICATED TO THE CORPORATION OF THE CITY OF CLARENCE-ROCKLAND AS PUBLIC HIGHWAYS.

Chantal Potvin
 CHANTAL POTVIN, PRESIDENT
 SPACEBUILDERS OTTAWA LTD.
 I HAVE THE AUTHORITY TO BIND THE CORPORATION

April 20, 2020
 DATE

SURVEYOR'S CERTIFICATE

I CERTIFY THAT:

1. THIS SURVEY AND PLAN ARE CORRECT AND IN ACCORDANCE WITH THE SURVEYS ACT, THE SURVEYORS ACT AND THE LAND TITLES ACT AND THE REGULATIONS MADE UNDER THEM.

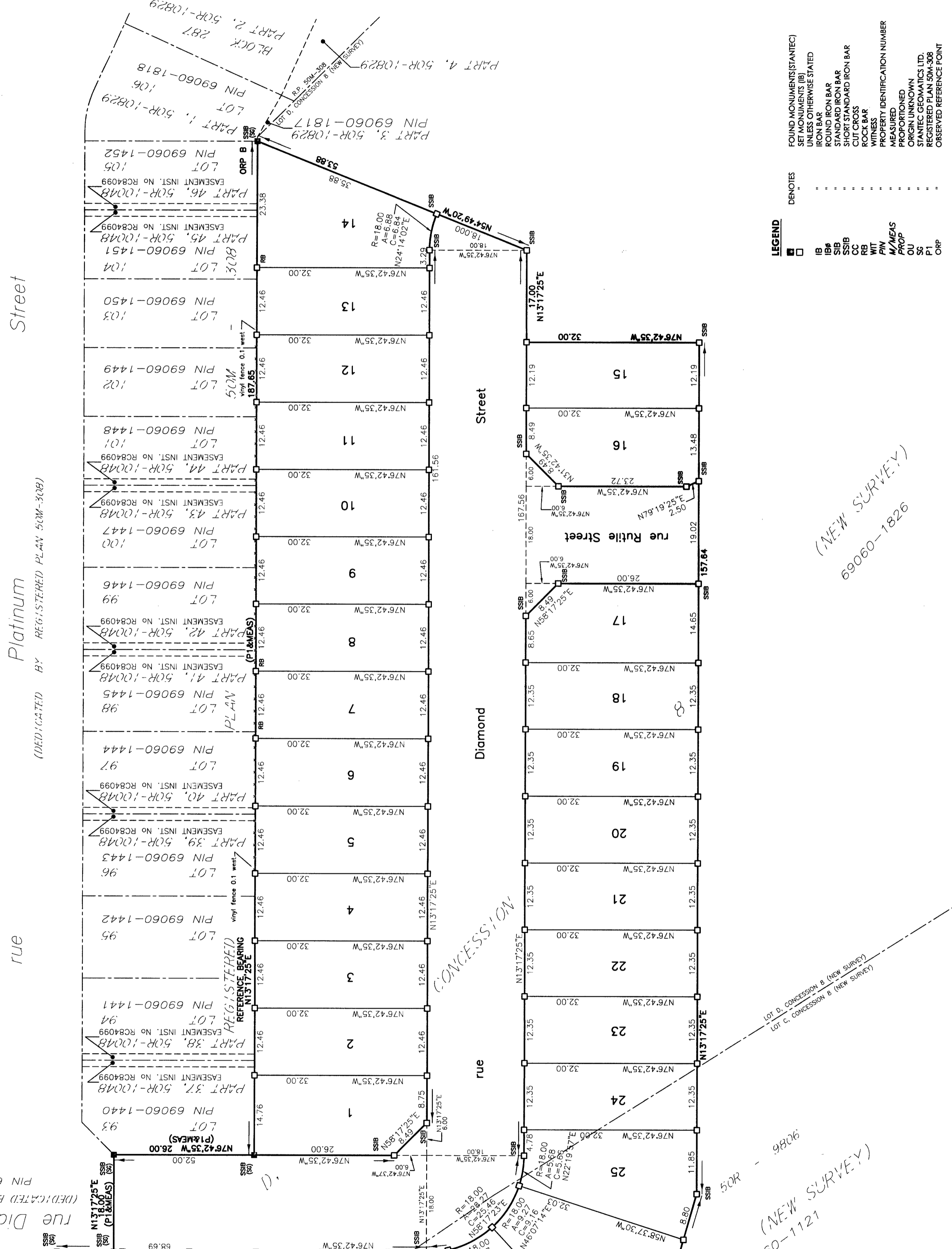
2. THE SURVEY WAS COMPLETED ON THE 2nd DAY OF APRIL, 2020.

April 14, 2020
 DATE

Francis Lau
 FRANCIS LAU
 ONTARIO LAND SURVEYOR

Stantec Geomatics Ltd.
 CANADA LAND SURVEYORS
 ONTARIO LAND SURVEYORS
 1331 CLYDE AVENUE, SUITE 400
 OTTAWA, ONTARIO, K2C 3G4
 TEL: 613.722.4490 FAX: 613.722.2799
 stantec.com

DRAWN: BDC CHECKED: FL FIELD: CA PROJECT No.: 161614132-132



OBSERVED REFERENCE POINTS DERIVED FROM GPS OBSERVATIONS USING THE CAN-NET VIRTUAL REFERENCE STATION NETWORK: 3rd MTM ZONE 9, NAD83 (CSRS) (1997). COORDINATES TO URBAN ACCURACY PER SEC. 14(2) OF REG. 216/10

ORP ID	NORTHING	EASTING
①	5047766.42	400008.73
②	504989.46	400099.10

COORDINATES CANNOT, IN THEMSELVES, BE USED TO RE-ESTABLISH CORNERS OR BOUNDARIES SHOWN ON THIS PLAN.

LEGEND

FOUND MONUMENTS (STANTEC) SM

SET MONUMENTS (IB) IB

UNLESS OTHERWISE STATED IB

ROUND IRON BAR RB

SHORT STANDARD IRON BAR RB

CUT CROSS RB

ROCK BAR RB

WITNESS RB

PROPERTY IDENTIFICATION NUMBER MEASURED M/M&M

PROPORTIONED PROP

ORIGIN UNKNOWN OU

STANTEC GEOMATICS LTD. ST

STANTEC SURVEYOR S

OBSERVED REFERENCE POINT ORP

NOTES

1. ALL PLANTED MONUMENTS SHOWN HEREON ARE IRON BARS (IB) UNLESS OTHERWISE NOTED.

OWNER'S CERTIFICATE

THIS IS TO CERTIFY THAT:

1. LOTS 1 TO 33, BOTH INCLUSIVE, THE STREETS, NAMELY rue Diamond Street and rue Rutile Street, HAVE BEEN LAID OUT IN ACCORDANCE WITH OUR INSTRUCTIONS.

2. THE STREETS ARE HEREBY DEDICATED TO THE CORPORATION OF THE CITY OF CLARENCE-ROCKLAND AS PUBLIC HIGHWAYS.

CHANTAL POTVIN, PRESIDENT
 SPACEBUILDERS OTTAWA LTD.
 I HAVE THE AUTHORITY TO BIND THE CORPORATION

DATE: April 20, 2020

SURVEYOR'S CERTIFICATE

I CERTIFY THAT:

1. THIS SURVEY AND PLAN ARE CORRECT AND IN ACCORDANCE WITH THE SURVEYS ACT, THE SURVEYORS ACT AND THE LAND TITLES ACT AND THE REGULATIONS MADE UNDER THEM.

2. THE SURVEY WAS COMPLETED ON THE 2nd DAY OF APRIL, 2020.

DATE: April 14, 2020

FRANCIS LAU
 ONTARIO LAND SURVEYOR

STANTEC Geomatics Ltd.
 CANADA LAND SURVEYORS
 ONTARIO LAND SURVEYORS
 1331 CLYDE AVENUE, SUITE 400
 OTTAWA, ONTARIO, K2C 3G4
 TEL: 613.722.4490 FAX: 613.722.2799
 stantec.com

DRAWN: BDC CHECKED: FL FIELD: CA PROJECT No.: 161614132-132