

Distances shown on this plan are ground distances and can be converted to grid distances by multiplying by the combined scale factor of 1.000005.

Bearings are grid, derived from Can-Net Real Time Network GPS observations and are referred to the Central Meridian of MTM Zone 9 NAD-83 (CSRS) (2010.0).

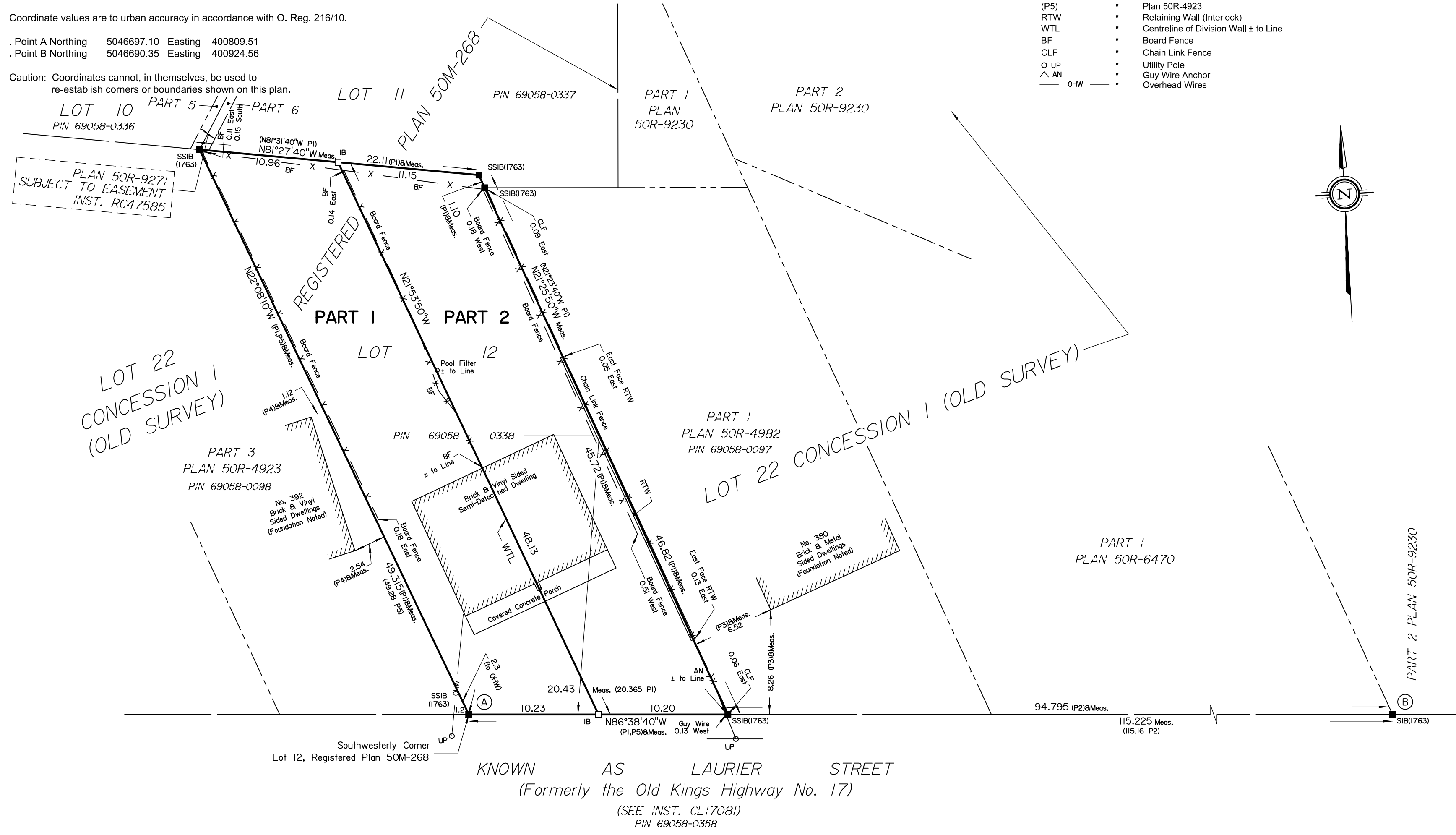
For bearing comparisons, a rotation of 0°57'10" counter-clockwise was applied to bearings on Plans (P1), (P2) & (P5).

Coordinates are derived from Can-Net 2016 Real Time Network GPS observations and are referred to the Central Meridian of MTM Zone 9 NAD-83 (CSRS) (2010.0).

Coordinate values are to urban accuracy in accordance with O. Reg. 216/10.

Point A Northing 5046697.10 Easting 400809.51
Point B Northing 5046690.35 Easting 400924.56

Caution: Coordinates cannot, in themselves, be used to re-establish corners or boundaries shown on this plan.



Notes & Legend

- Denotes Survey Monument Planted
- " Survey Monument Found
- SIB " Standard Iron Bar
- SSIB " Short Standard Iron Bar
- IB " Iron Bar
- (WIT) " Witness
- (AOG) " Annis, O'Sullivan, Vollebekk Ltd.
- Meas. " Measured
- (P1) " Registered Plan 50M-268
- (P2) " Plan 50R-9230
- (P3) " Plan by J.G. Payette Ltd. Dated October 6, 1992
- (P4) " Plan by Denis Dutrisac Inc, Dated October 16, 1986
Index #CLA-O.S.-01-22-02
Plan 50R-4923
- (P5) " Plan 50R-4923
- RTW " Retaining Wall (Interlock)
- WTL " Centreline of Division Wall ± to Line
- BF " Board Fence
- CLF " Chain Link Fence
- UP " Utility Pole
- △ AN " Guy Wire Anchor
- OHW — " Overhead Wires

SCHEDULE

PART	LOT	REGISTERED PLAN	PIN
1	ALL OF 12	50M-268	ALL OF 69058-0338
2			

PLAN 50R-11686

Received and deposited

December 2nd, 2024

Nirosha Nagenthirarajah

Representative for the
Land Registrar for the
Land Titles Division of
Russell (No.50)

PLAN OF SURVEY OF
LOT 12
REGISTERED PLAN 50M-268
CITY OF CLARENCE-ROCKLAND
COUNTY OF RUSSELL

Surveyed by Annis, O'Sullivan, Vollebekk Ltd.



The intended plot size of this plan is 610 mm in width by 355 mm in height when plotted at a scale of 1:250.

Metric
DISTANCES AND COORDINATES SHOWN ON THIS PLAN ARE IN METRES AND CAN BE CONVERTED TO FEET BY DIVIDING BY 0.3048.

Surveyor's Certificate
I CERTIFY THAT :
1. This survey and plan are correct and in accordance with the Surveys Act, the Surveyors Act, the Land Titles Act and the regulations made under them.
2. The survey was completed on October 3, 2024.

November 29, 2024 Date
Tyler J. Allison Ontario Land Surveyor

This plan of survey relates to AOLS Plan Submission form number: V-85684.

ANNIS, O'SULLIVAN, VOLLEBEKK LTD.
165 Bay Street
Embrun, Ont. K0A 1W1
Phone: (613) 443-3364
Email: Embrun@aovltd.com

Ontario Land Surveyors Job No. E-4371-24