

Notes & Legend

- Denotes Survey Monument Planted
- Survey Monument Found
- SIB Standard Iron Bar
- SSIB Short Standard Iron Bar
- IB Iron Bar
- (WT) Witness
- (AOG) Annis, O'Sullivan, Vollebakk Ltd.
- Meas. Measured
- (P1) Plan 50R-7498
- (P2) Plan 50R-506
- (P3) Plan 50R-2164
- (P4) Plan 50R-7394

SCHEDULE

PART	LOT	CONCESSION	PIN
1	PART OF 24	3	PART OF 69035-0121
2			

PLAN 50R-11820

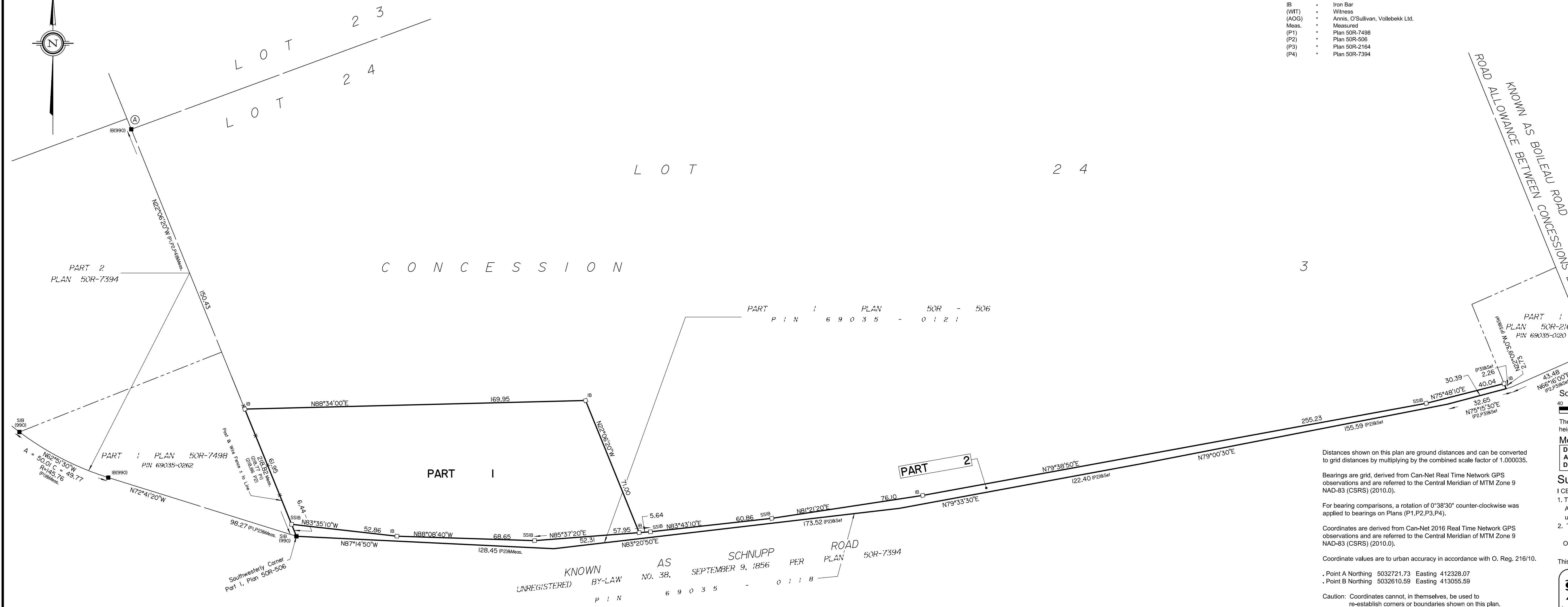
Received and deposited

October 3rd, 2025

Alison Chiu

Representative for the
Land Registrar for the
Land Titles Division of
Russell (No.50)

PLAN OF SURVEY OF
PART OF LOT 24
CONCESSION 3
(Geographic Township of Clarence)
CITY OF CLARENCE-ROCKLAND
COUNTY OF RUSSELL
Surveyed by Annis, O'Sullivan, Vollebakk Ltd.



The intended plot size of this plan is 914 mm in width by 356 mm in height when plotted at a scale of 1:1000.

Metric
DISTANCES AND COORDINATES SHOWN ON THIS PLAN ARE IN METRES AND CAN BE CONVERTED TO FEET BY DIVIDING BY 0.3048.

Surveyor's Certificate

I CERTIFY THAT :
1. This survey and plan are correct and in accordance with the Surveys Act, the Surveyors Act, the Land Titles Act and the regulations made under them.
2. The survey was completed on August 25, 2025.

October 2, 2025
Date
This plan of survey relates to AOLS Plan Submission form number: V-98087.

Tyler J. Allison
Ontario Land Surveyor

ANNIS, O'SULLIVAN, VOLLEBEKK LTD.
165 Bay Street
Embrun, Ont. K0A 1W1
Phone: (613) 443-3364
Email: Embrun@aovltd.com

Ontario Land Surveyors Job No. E-5216-25

Distances shown on this plan are ground distances and can be converted to grid distances by multiplying by the combined scale factor of 1.000035.

Bearings are grid, derived from Can-Net Real Time Network GPS observations and are referred to the Central Meridian of MTM Zone 9 NAD-83 (CSRS) (2010.0).

For bearing comparisons, a rotation of 0°38'30" counter-clockwise was applied to bearings on Plans (P1,P2,P3,P4).

Coordinates are derived from Can-Net 2016 Real Time Network GPS observations and are referred to the Central Meridian of MTM Zone 9 NAD-83 (CSRS) (2010.0).

Coordinate values are to urban accuracy in accordance with O. Reg. 216/10.

. Point A Northing 5032721.73 Easting 412328.07
. Point B Northing 5032610.59 Easting 413055.59

Caution: Coordinates cannot, in themselves, be used to re-establish corners or boundaries shown on this plan.

KNOWN BY-LAW NO. 38. SEPTEMBER 9, 1856 PER PLAN 50R-7394
UNREGISTERED
P I N 6 9 0 3 5 - 0 1 1 8