

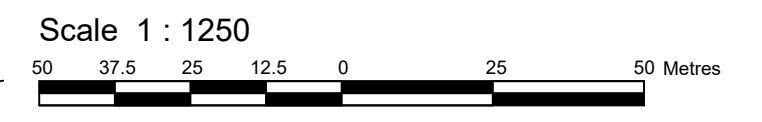
**PLAN 50R-11380**  
 Received and deposited  
September 28<sup>th</sup>, 2022  
Kevin Oikonen  
 Representative for the  
 Land Registrar for the  
 Land Titles Division of  
 Russell (No.50)

COUNTY ROAD No. 17  
 (FORMERLY TRANS-CANADA HIGHWAY No. 17)  
 (M.T.C. PLAN P-1775-16, INST. 22354) (SEE INST. RR169126)

**SCHEDULE**

PART	LOT	CONCESSION	PIN
1	Part of 13	1 (Old Survey)	All of 69050-0046
2			
3			
4			
5			
6			
7			
8	Part of 12		

**PLAN OF SURVEY OF  
 PART OF LOTS 12 & 13  
 CONCESSION 1 (Old Survey)  
 (Geographic Township of Clarence)  
 CITY OF CLARENCE-ROCKLAND  
 COUNTY OF RUSSELL**  
 Surveyed by Annis, O'Sullivan, Vollebakk Ltd.



The intended plot size of the plan is 457 mm in width by 610 mm in height when plotted at a scale of 1:1250.

**Metric**  
 DISTANCES AND COORDINATES SHOWN ON THIS PLAN ARE IN METRES AND CAN BE CONVERTED TO FEET BY DIVIDING BY 0.3048.

**Surveyor's Certificate**

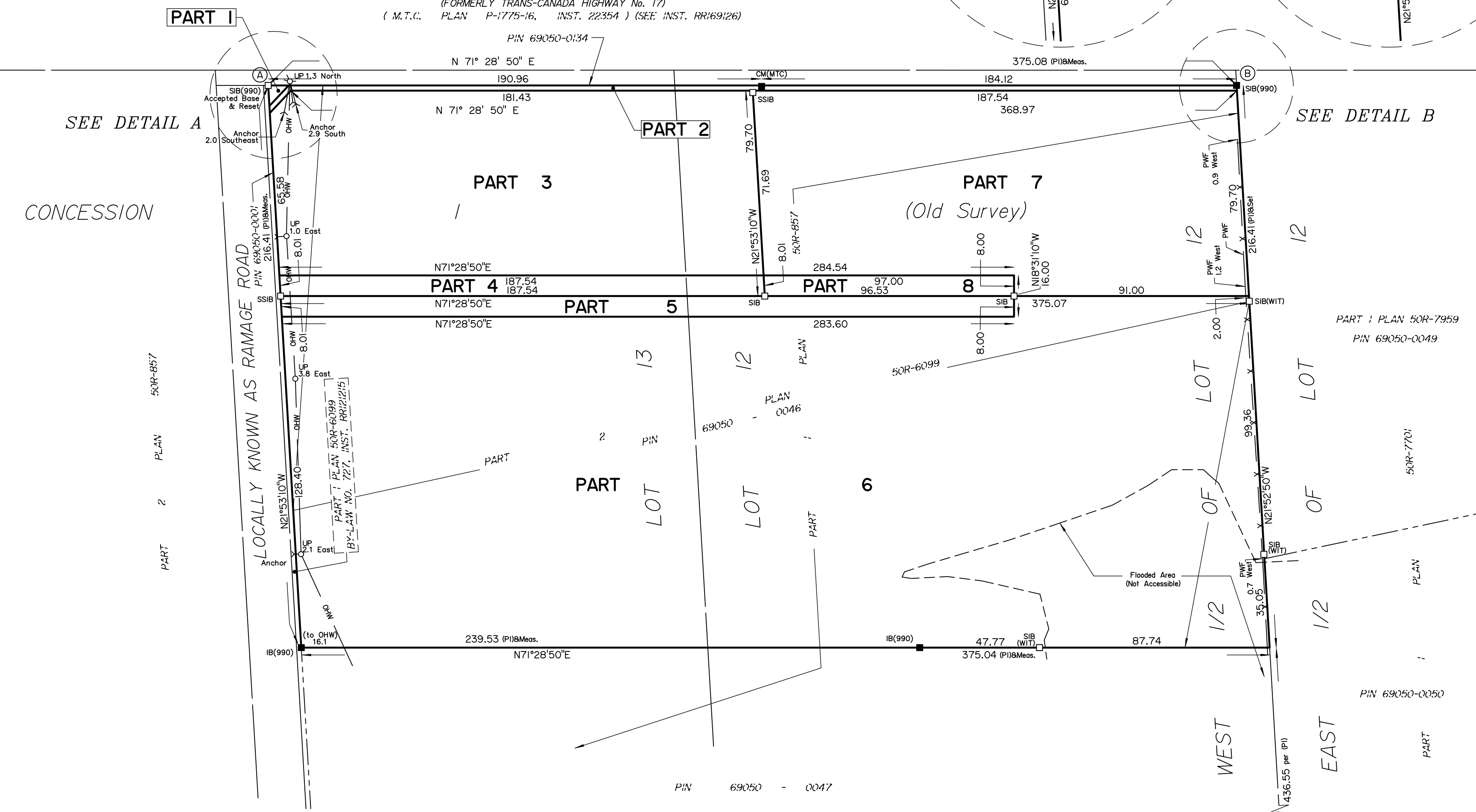
I CERTIFY THAT:  
 1. This survey and plan are correct and in accordance with the Surveys Act, the Surveyors Act, the Land Titles Act and the regulations made under them.  
 2. The survey was completed on September 27, 2022.

September 27, 2022 Date  
 Tyler J. Allison  
 Ontario Land Surveyor

This plan relates to AOLS Plan Submission form number V-24592.

**Notes & Legend**

- Denotes Survey Monument Planted
- Denotes Survey Monument Found
- SIB Standard Iron Bar
- SSIB Short Standard Iron Bar
- IB Iron Bar
- (WIT) Witness
- (AOG) Annis, O'Sullivan, Vollebakk Ltd.
- Meas. Measured
- (P1) Plan 50R-6099
- OHW Overhead Wires



Distances shown on this plan are ground distances and can be converted to grid distances by multiplying by the combined scale factor of 1.00001.  
 Bearings are grid, derived from Can-Net 2016 Real Time Network GPS observations and are referred to the Central Meridian of MTM Zone 9 NAD-83 (CSRS) (2010.0).  
 For bearing comparisons, a rotation of 0°58'10" counter-clockwise was applied to bearings on Plan (P1).  
 Coordinates are derived from Can-Net 2016 Real Time Network GPS observations and are referred to the Central Meridian of MTM Zone 9 NAD-83 (CSRS) (2010.0).  
 Coordinate values are to urban accuracy in accordance with O. Reg. 216/10.  
 . Point A Northing 5047997.88 Easting 404350.34  
 . Point B Northing 5048117.02 Easting 404705.00  
 Caution: Coordinates cannot, in themselves, be used to re-establish corners or boundaries shown on this plan.

**ANNIS, O'SULLIVAN, VOLLEBEKK LTD.**  
 165 Bay Street  
 Etobicoke, Ont. M9A 1W1  
 Phone: (613) 443-3364  
 Email: Embrun@aosvlltd.com

Ontario Land Surveyors Job No. E-2340-22 AM.