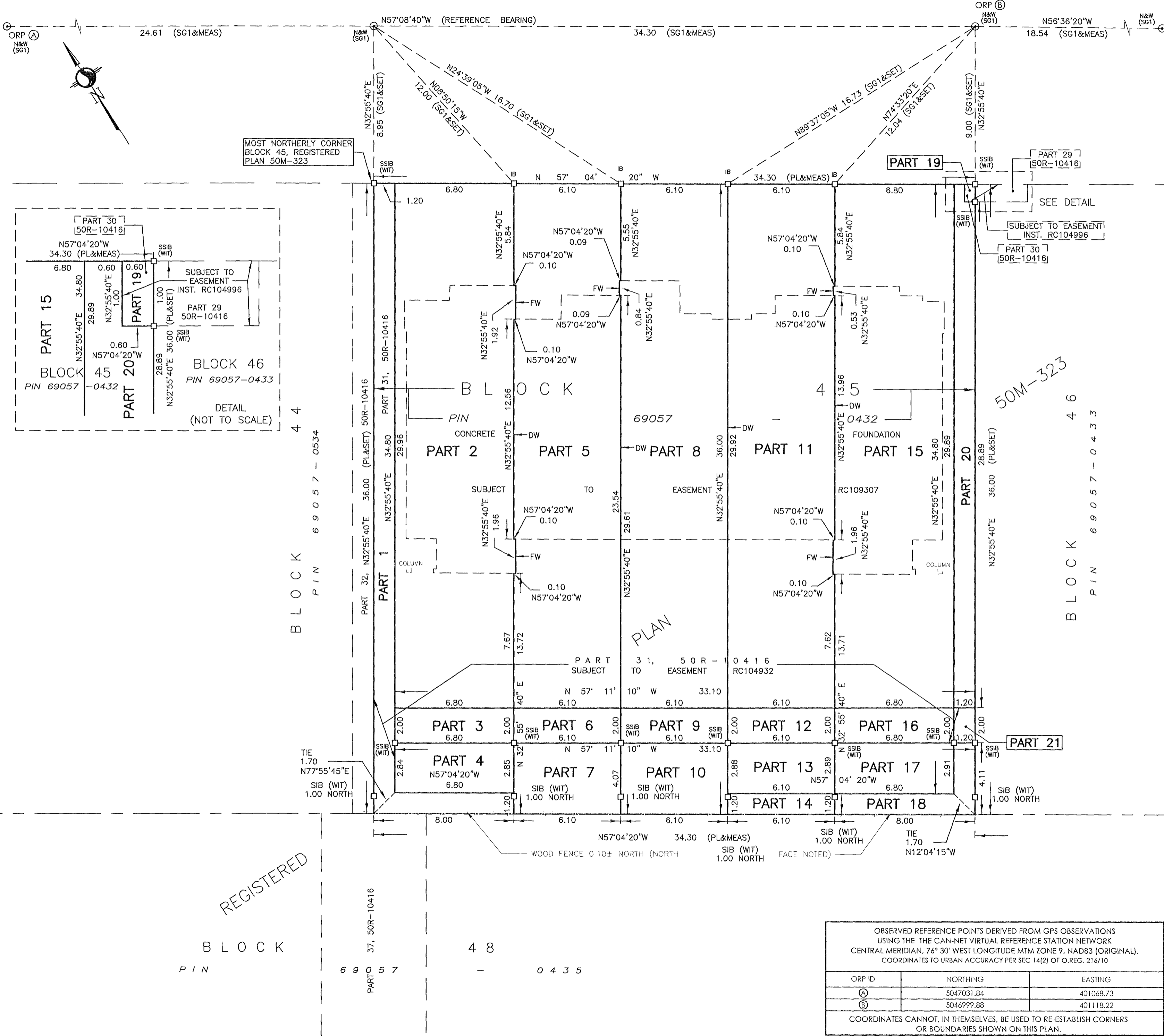


21 January 2020 10:24 AM
w:\active\161550000 EQ Homes Clarence-Crossing_50M-323-50M-323 construction\drawings\161550000-108_BLOCK 45_50M-323.dwg

rue de l'Étang Street
(DEDICATED BY REGISTERED PLAN 50M-323)
PIN 69057-0454

I REQUIRE THIS PLAN TO BE DEPOSITED UNDER THE LAND TITLES ACT.
DATE: Jan 21/20
BRIAN J. WEBSTER
ONTARIO LAND SURVEYOR

PLAN 50R-10970
RECEIVED AND DEPOSITED
DATE: January 21 2020
J. Hansen
REGISTRAR FOR THE LAND TITLES DIVISION OF RUSSELL (50).



SCHEDULE

| PART | BLOCK 45 | PLAN | PIN |
|------|-----------|---------|-------------------|
| 1 | ALL OF 45 | 50M-323 | ALL OF 69057-0432 |
| 2 | | | |
| 3 | | | |
| 4 | | | |
| 5 | | | |
| 6 | | | |
| 7 | | | |
| 8 | | | |
| 9 | | | |
| 10 | | | |
| 11 | | | |
| 12 | | | |
| 13 | | | |
| 14 | | | |
| 15 | | | |
| 16 | | | |
| 17 | | | |
| 18 | | | |
| 19 | | | |
| 20 | | | |
| 21 | | | |

PARTS 1 TO 21 (INCLUSIVE) - SUBJECT TO EASEMENTS INST RC109307.
PARTS 1, 3, 6, 9, 12, 16 AND 21 - SUBJECT TO EASEMENT INST. RC104932.
PART 19 - SUBJECT TO EASEMENT INST. RC104996

PLAN OF SURVEY OF
BLOCK 45
REGISTERED PLAN 50M-323
CITY OF CLARENCE-ROCKLAND
Scale 1:150
METRIC CONVERSION
DISTANCES AND COORDINATES SHOWN ON THIS PLAN ARE IN METRES AND CAN BE CONVERTED TO FEET BY DIVIDING BY 0.3048
GRID SCALE CONVERSION
DISTANCES ARE GROUND AND CAN BE CONVERTED TO GRID BY MULTIPLYING BY THE COMBINED SCALE FACTOR OF 1.00000.
BEARING NOTE
BEARINGS ARE GRID AND ARE REFERRED TO A TRAVERSE LINE PER THE ARCHIVES OF STANTEC GEOMATICS LTD. HAVING A BEARING OF N57°08'40\"/>

LEGEND

| SYMBOL | NOTES | DESCRIPTION |
|--------|--|--|
| ■ | FOUND MONUMENTS | FOUND MONUMENTS |
| □ | SET MONUMENTS | SET MONUMENTS |
| IB | IRON BAR | IRON BAR |
| SIB | STANDARD IRON BAR | STANDARD IRON BAR |
| SSIB | SHORT STANDARD IRON BAR | SHORT STANDARD IRON BAR |
| CC | CUT CROSS | CUT CROSS |
| CP | CONCRETE PIN | CONCRETE PIN |
| WIT | WITNESS | WITNESS |
| PIN | PROPERTY IDENTIFICATION NUMBER | PROPERTY IDENTIFICATION NUMBER |
| MEAS | MEASURED | MEASURED |
| PROP | PROPORTIONED | PROPORTIONED |
| OU | ORIGIN UNKNOWN | ORIGIN UNKNOWN |
| ORP | OBSERVED REFERENCE POINT | OBSERVED REFERENCE POINT |
| PL | REGISTERED PLAN 50M-323 | REGISTERED PLAN 50M-323 |
| DW | APPROXIMATE CENTRE LINE OF DIVISION WALL | APPROXIMATE CENTRE LINE OF DIVISION WALL |
| FW | FACE OF EXTERIOR WALL | FACE OF EXTERIOR WALL |
| SG | STANTEC GEOMATICS LTD. | STANTEC GEOMATICS LTD. |
| SG1 | SG COORDINATE FILE FOR PL | SG COORDINATE FILE FOR PL |

SURVEYOR'S CERTIFICATE
I CERTIFY THAT:
1. THIS SURVEY AND PLAN ARE CORRECT AND IN ACCORDANCE WITH THE SURVEYS ACT, THE SURVEYORS ACT AND THE LAND TITLES ACT AND THE REGULATIONS MADE UNDER THEM.
2. THE SURVEY WAS COMPLETED ON THE 20th DAY OF JANUARY, 2020.

Jan 21/20
DATE
BRIAN J. WEBSTER
ONTARIO LAND SURVEYOR

OBSERVED REFERENCE POINTS DERIVED FROM GPS OBSERVATIONS USING THE THE CAN-NET VIRTUAL REFERENCE STATION NETWORK CENTRAL MERIDIAN, 76° 30' WEST LONGITUDE MTM ZONE 9, NAD83 (ORIGINAL). COORDINATES TO URBAN ACCURACY PER SEC 14(2) OF O.REG. 216/10

| ORP ID | NORTHING | EASTING |
|--------|------------|-----------|
| (A) | 5047031.84 | 401068.73 |
| (B) | 5046999.88 | 401118.22 |

COORDINATES CANNOT, IN THEMSELVES, BE USED TO RE-ESTABLISH CORNERS OR BOUNDARIES SHOWN ON THIS PLAN.

Stantec Geomatics Ltd.
CANADA LANDS SURVEYORS
ONTARIO LAND SURVEYORS
1331 CLYDE AVENUE, SUITE 400
OTTAWA, ONTARIO, K2C 3G4
TEL. 613.722.4420
stantec.com

DRAWN: NJ CHECKED: MS PM: AK FIELD: LG PROJECT No.: 161650000-109